

GAMMA RAY / CCL CEMENT BOND LOG

Company **PSIWIRELINE, INC.**
 Well **WELL NAME**
 Field **FIELD NAME**
 County **TOM GREEN**
 State **TEXAS**

Company **PSIWIRELINE, INC.**
 Well **WELL NAME**
 Field **FIELD NAME**
 County **TOM GREEN** State **TEXAS**

Location: **API #: 00-000-00000**
 000' PML & 000' FSL
 RAIL ROAD CO. SURVEY
 SEC 00 BLK 000 ABS 000
 Permanent Datum **GL** Elevation **0000'**
 Log Measured From **GL+KB 0'**
 Drilling Measured From **KB**

Other Services
 Elevation
K.B. 0000'
D.F. 0000'
G.L. 0000'

Date	January 01, 2009	
Run Number	ONE	
Depth Driller	0000'	
Depth Logger	0000'	
Bottom Logged Interval	0000'	
Top Log Interval	SURFACE	
Open Hole Size	0"	
Type Fluid	WATER	
Density / Viscosity		
Max. Recorded Temp.		
Estimated Cement Top	SURFACE	
Time Well Ready	00:00	
Time Logger on Bottom	00:00	
Equipment Number	44	
Location	SAN ANGELO	
Recorded By	ENGINEER	
Witnessed By	CO. REP.	

	Borehole Record		Tubing Record	
	Bit	From	To	To
Casing Record				
Surface String	Size	Weight	Top	Bottom
Prot. String				
Production String	5.5	N/A	SURFACE	TD
Liner				

<<< Fold Here >>>

All interpretations are opinions based on inferences from electrical or other measurements and we cannot and do not guarantee the accuracy or correctness of any interpretation, and we shall not, except in the case of gross or willful negligence on our part, be liable or responsible for any loss, costs, damages, or expenses incurred or sustained by anyone resulting from any interpretation made by any of our officers, agents or employees. These interpretations are also subject to our general terms and conditions set out in our current Price Schedule.

Comments

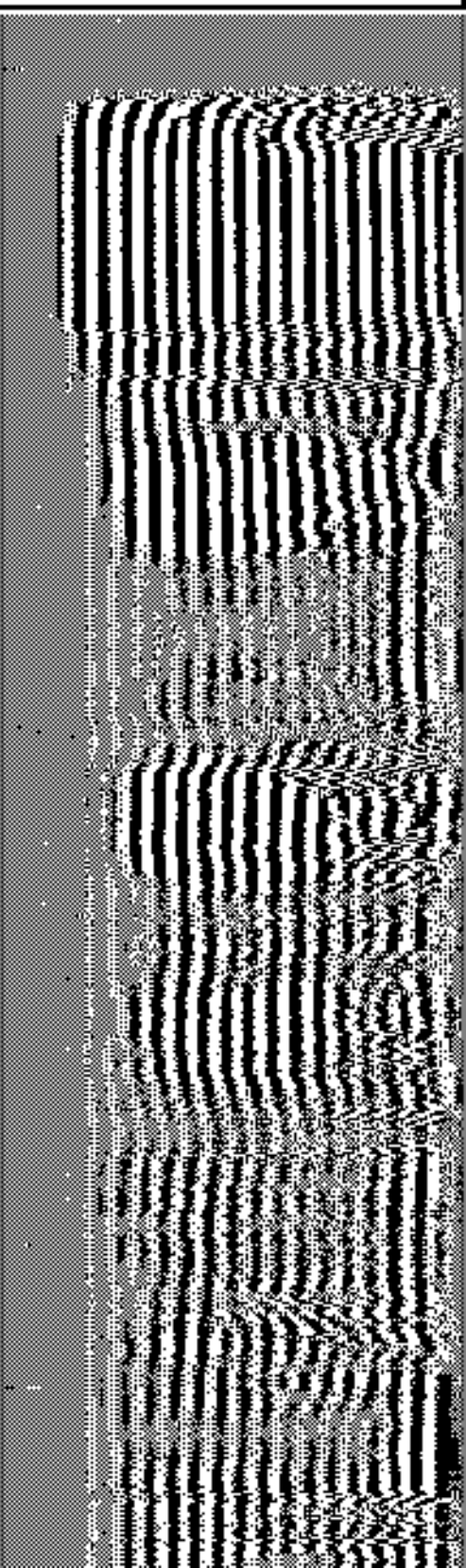
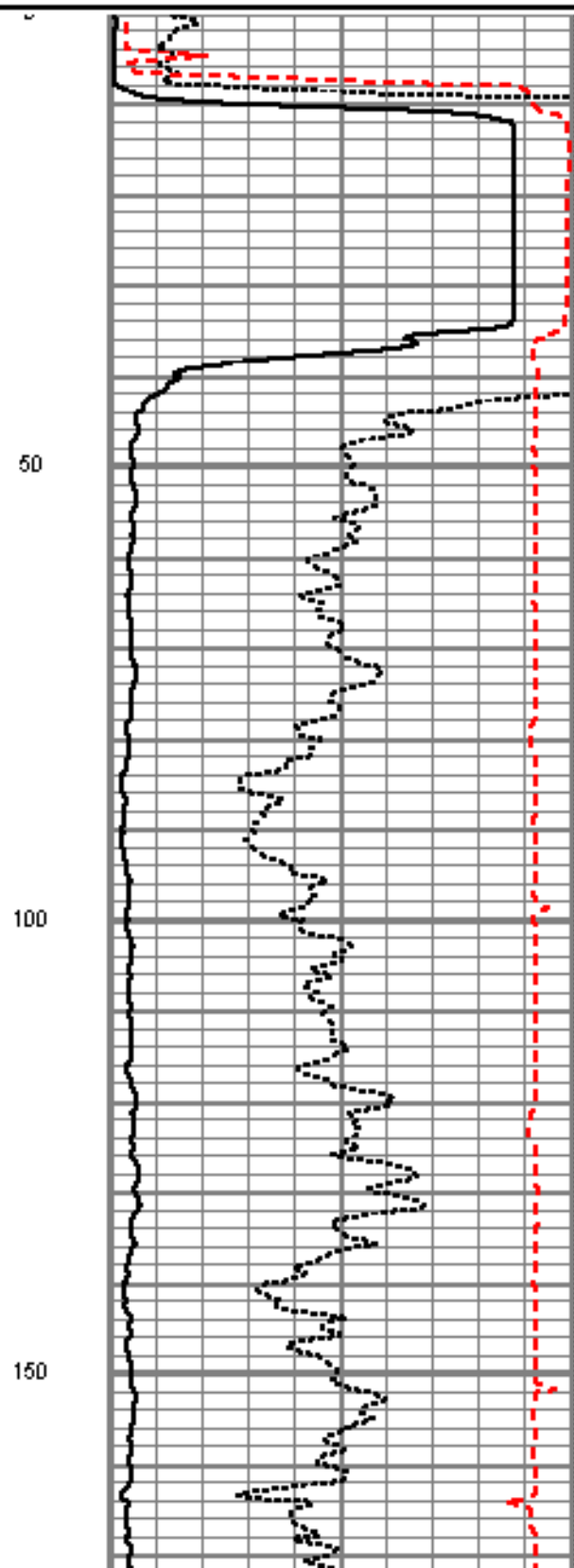
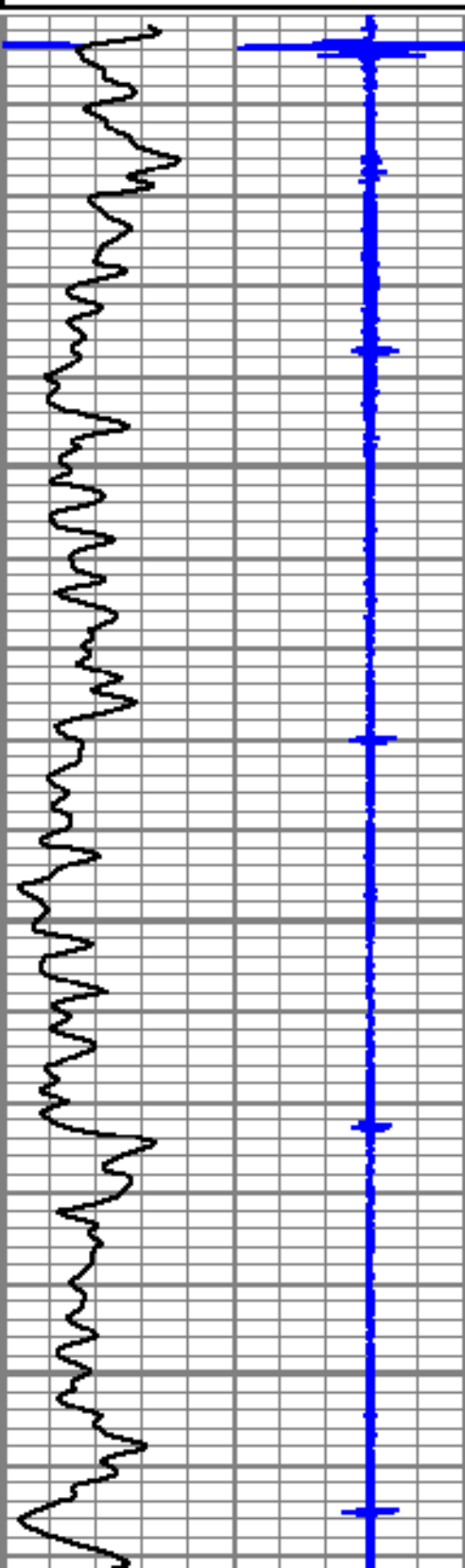
 FILE# 0000

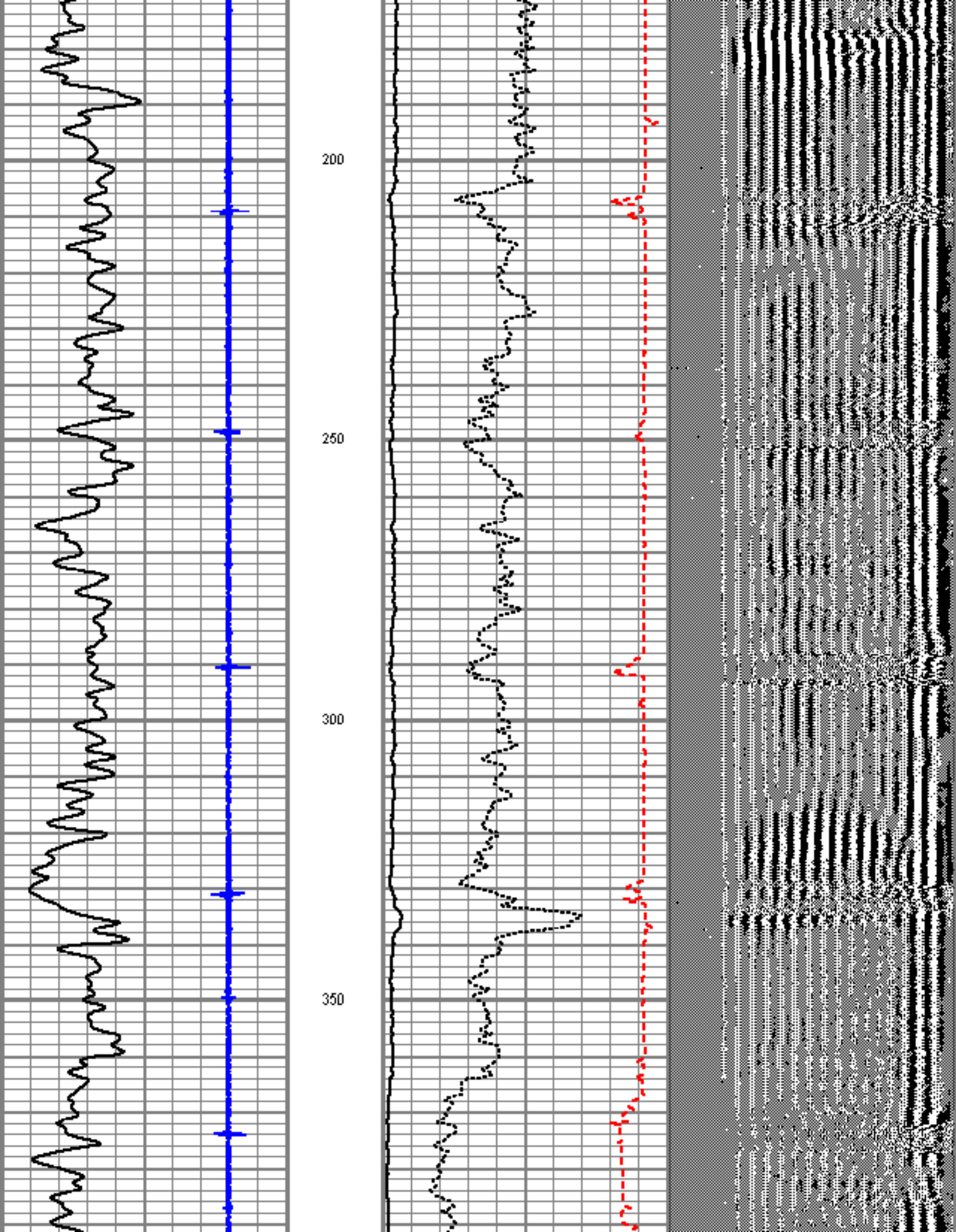
Database File: 2895.db
Dataset Pathname: pass4
Presentation Format: scbl_dr
Dataset Creation: Mon Feb 23 10:26:18 2009 by Log Open-Cased 070814
Charted by: Depth in Feet scaled 1:240

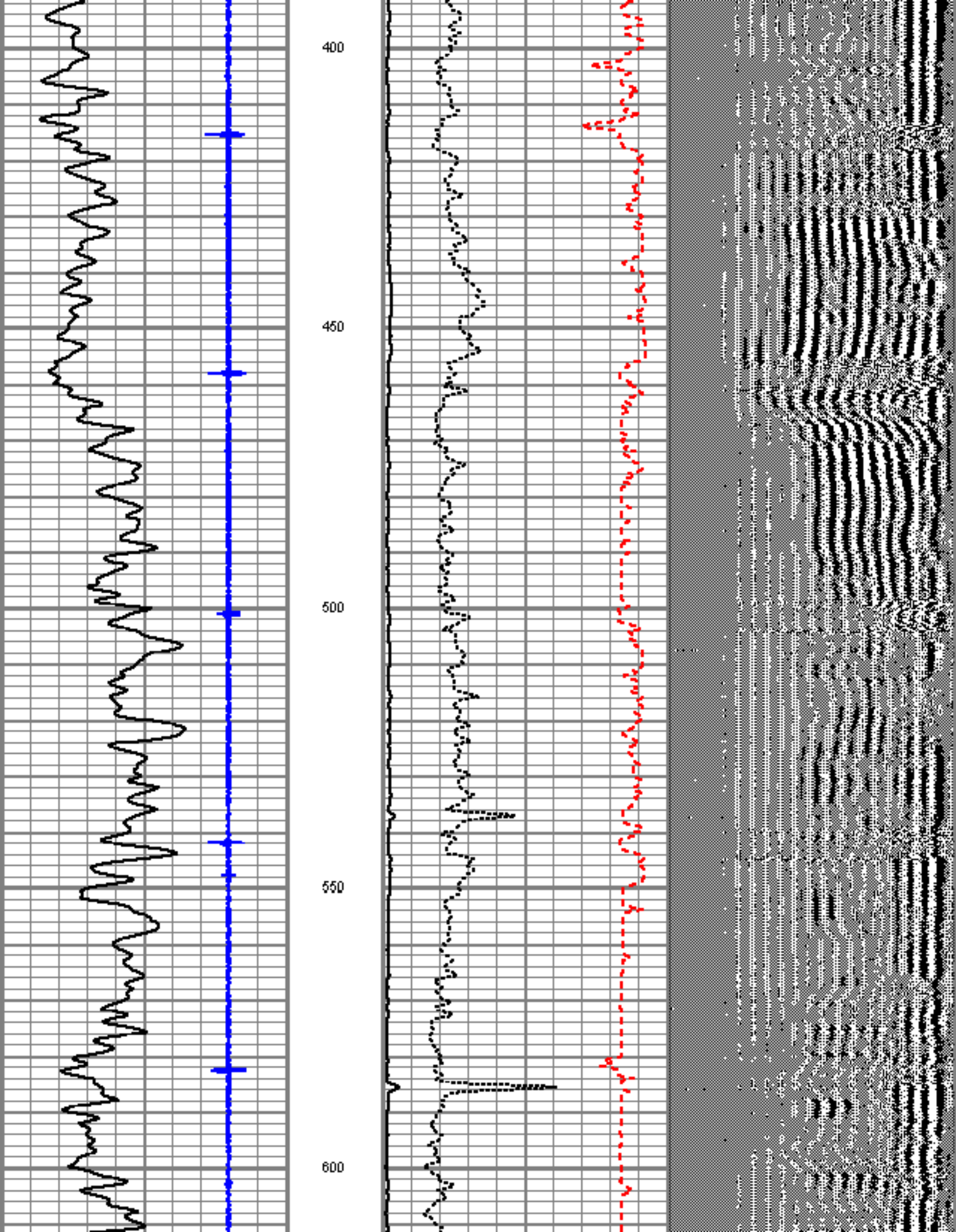
0	Collar Locator	10
0	Gamma Ray (GAPI)	125
0	Line Speed (ft/min)	100

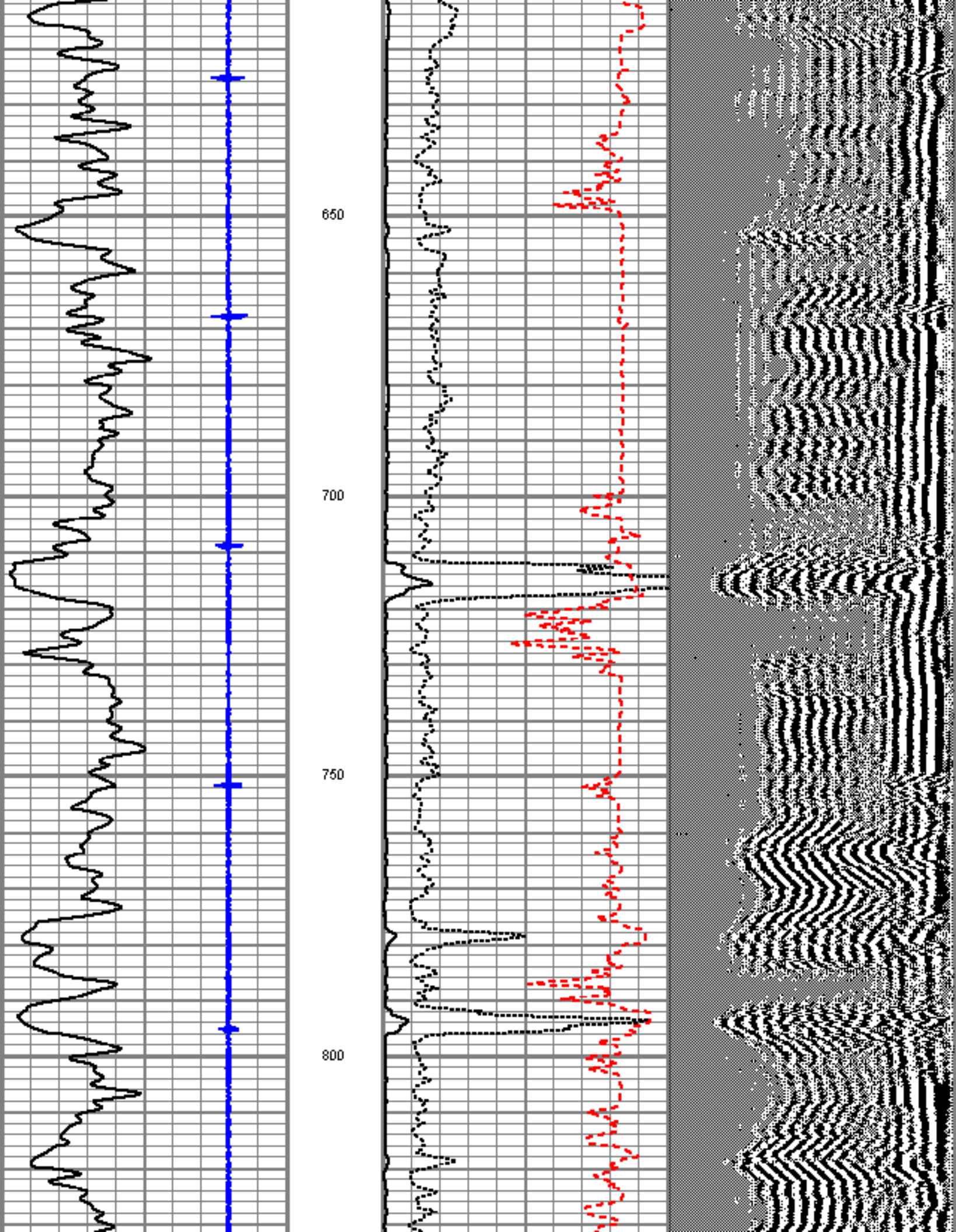
0	AMP5FT (mV)	100
800	TT3ft (usec)	200

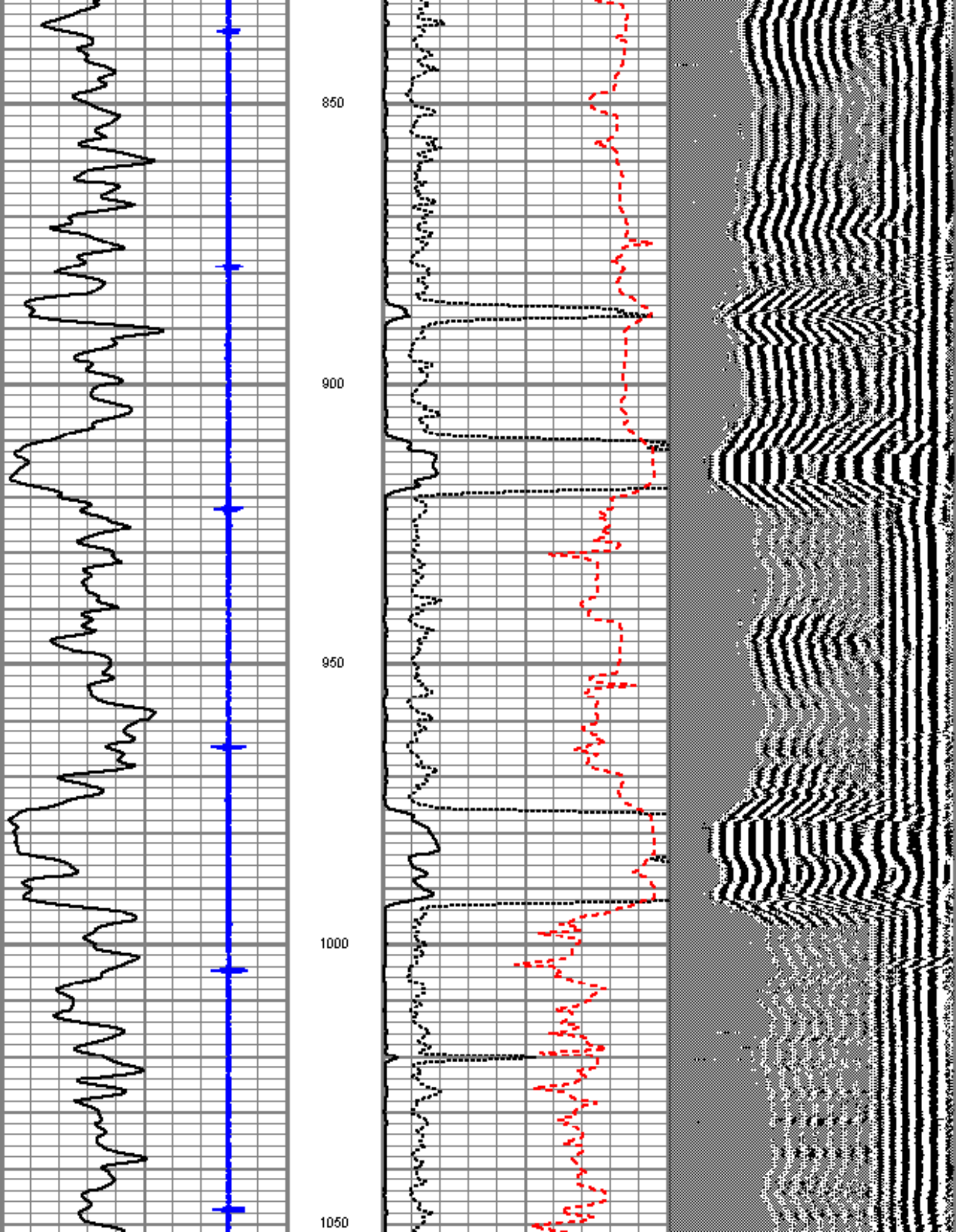
VDL 5ft 1200

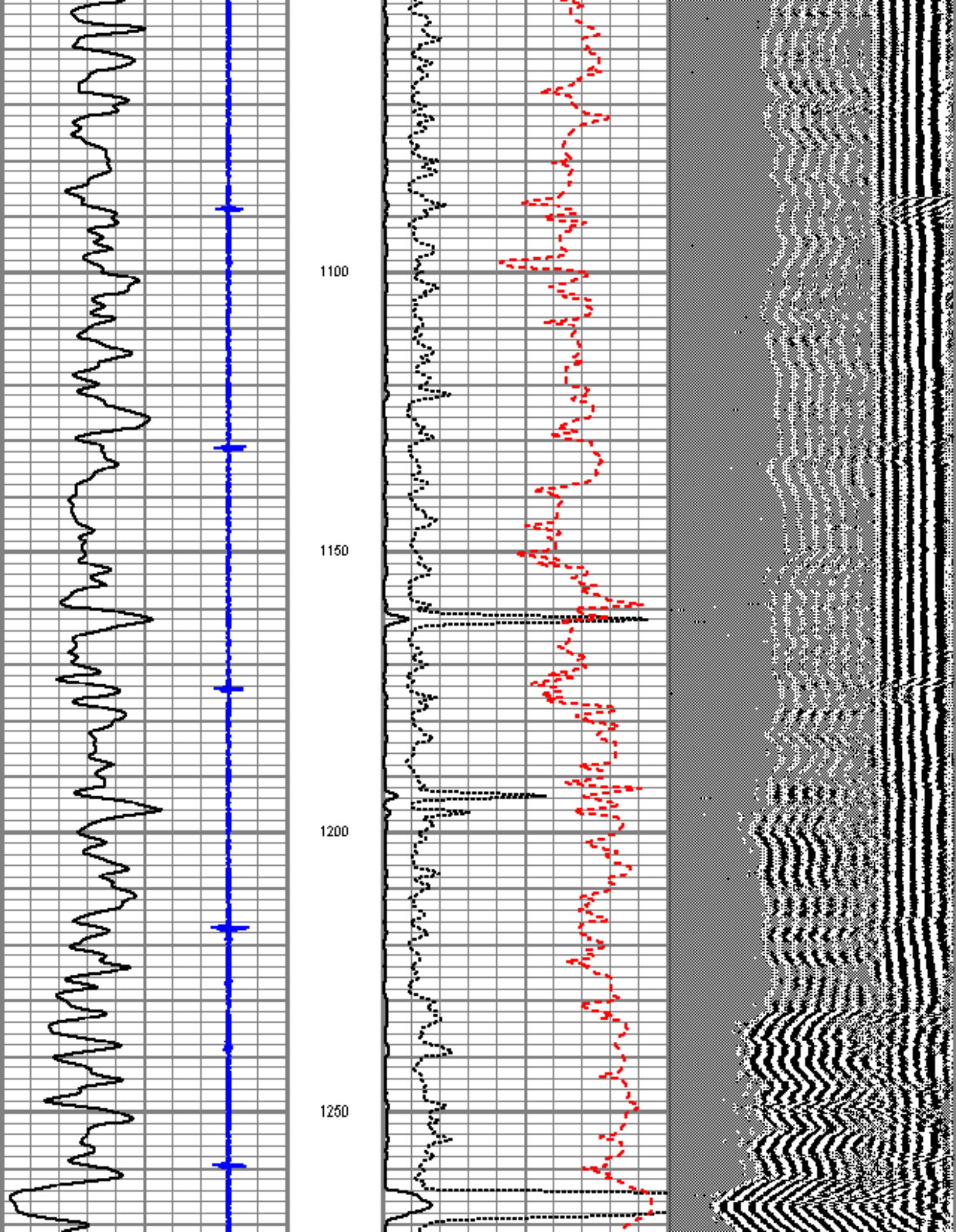


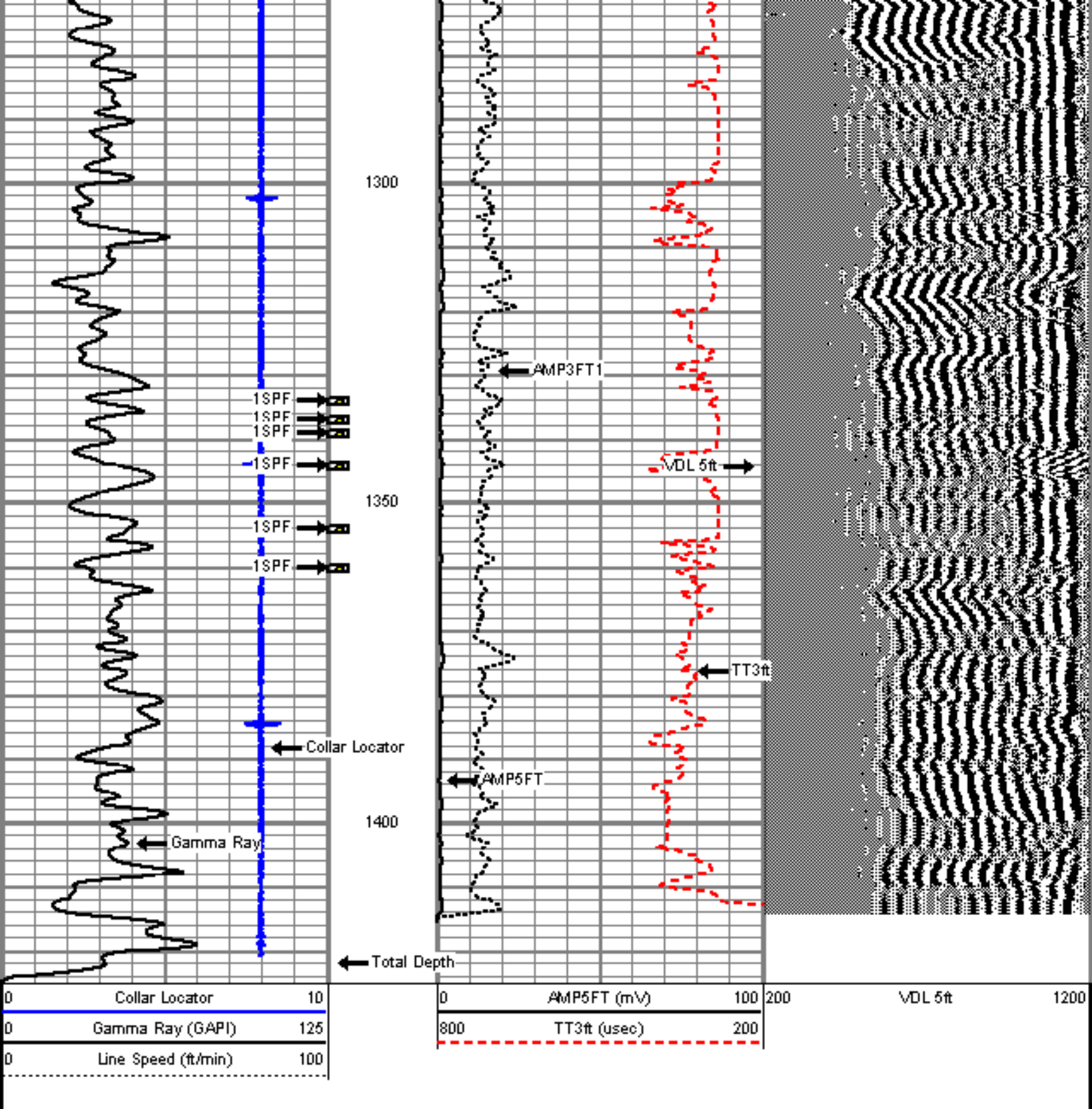





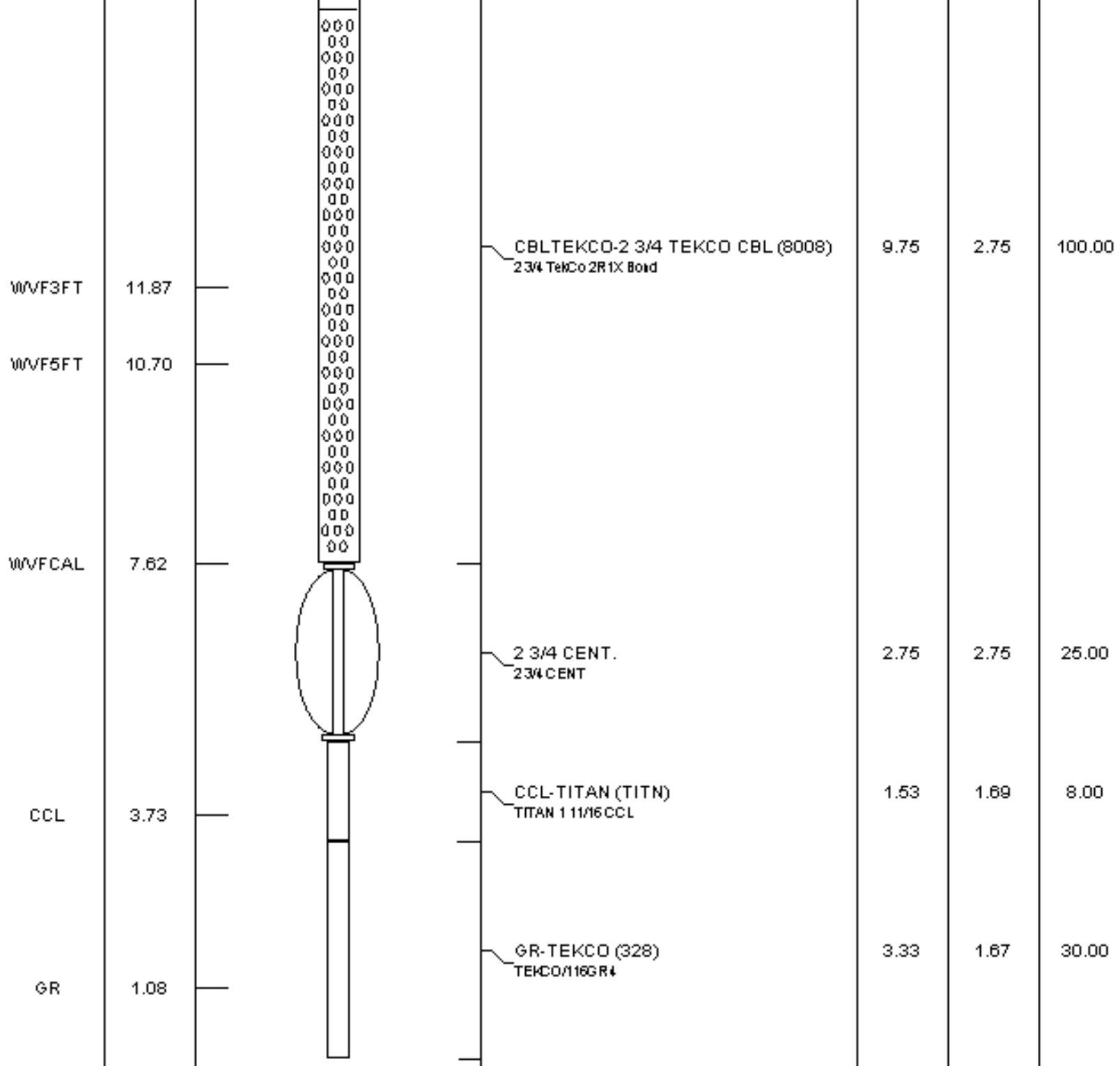








Sensor	Offset (ft)	Schematic	Description	Len (ft)	OD (in)	Wt (lb)
			2 3/4 CENT. 2 3/4 CENT	2.75	2.75	25.00



Dataset: 2895.db: field/well/run1/pass3
 Total Length: 20.12 ft
 Total Weight: 188.00 lb
 O.D.: 2.75 in