



**GAMMA RAY  
COMPENSATED  
NEUTRON  
CCL LOG**

Company **PSIWIRELINE, INC.**  
 Well **WELL NAME**  
 Field **FIELD NAME**  
 County **TOM GREEN**  
 State **TEXAS**

Company **PSIWIRELINE, INC.**  
 Well **WELL NAME**  
 Field **FIELD NAME**  
 County **TOM GREEN** State **TEXAS**

Location: **API #: 00-000-00000**  
**000' PVL & 000' FSL**  
**RAIL ROAD CO. SURVEY**  
**SEC 00 BLK 000 ABS 000**  
 Permanent Datum **GL** Elevation **0000'**  
 Log Measured From **GL+KB 0'**  
 Drilling Measured From **KB**  
 Other Services  
 Elevation  
**K.B. 0000'**  
**D.F. 0000'**  
**G.L. 0000'**

Date	January 01, 2009						
Run Number	ONE						
Depth Driller	0000'						
Depth Logger	0000'						
Bottom Logged Interval	0000'						
Top Log Interval	SURFACE						
Open Hole Size	0"						
Type Fluid	WATER						
Density / Viscosity							
Max. Recorded Temp.	SURFACE						
Estimated Cement Top	SURFACE						
Time Well Ready	00:00						
Time Logger on Bottom	00:00						
Equipment Number	44						
Location	SAN ANGELO						
Recorded By	ENGINEER						
Witnessed By	CO. REP.						
Borehole Record		Tubing Record					
Run Number	Bit	From	To	Size	Weight	From	To
Casing Record	Size	Weight	Top	Bottom			
Surface String							
Prot. String							
Production String	5.5	N/A	SURFACE	TD			
Liner							

<<< Fold Here >>>

All interpretations are opinions based on inferences from electrical or other measurements and we cannot and do not guarantee the accuracy or correctness of any interpretation, and we shall not, except in the case of gross or willful negligence on our part, be liable or responsible for any loss, costs, damages, or expenses incurred or sustained by anyone resulting from any interpretation made by any of our officers, agents or employees. These interpretations are also subject to our general terms and conditions set out in our current Price Schedule.

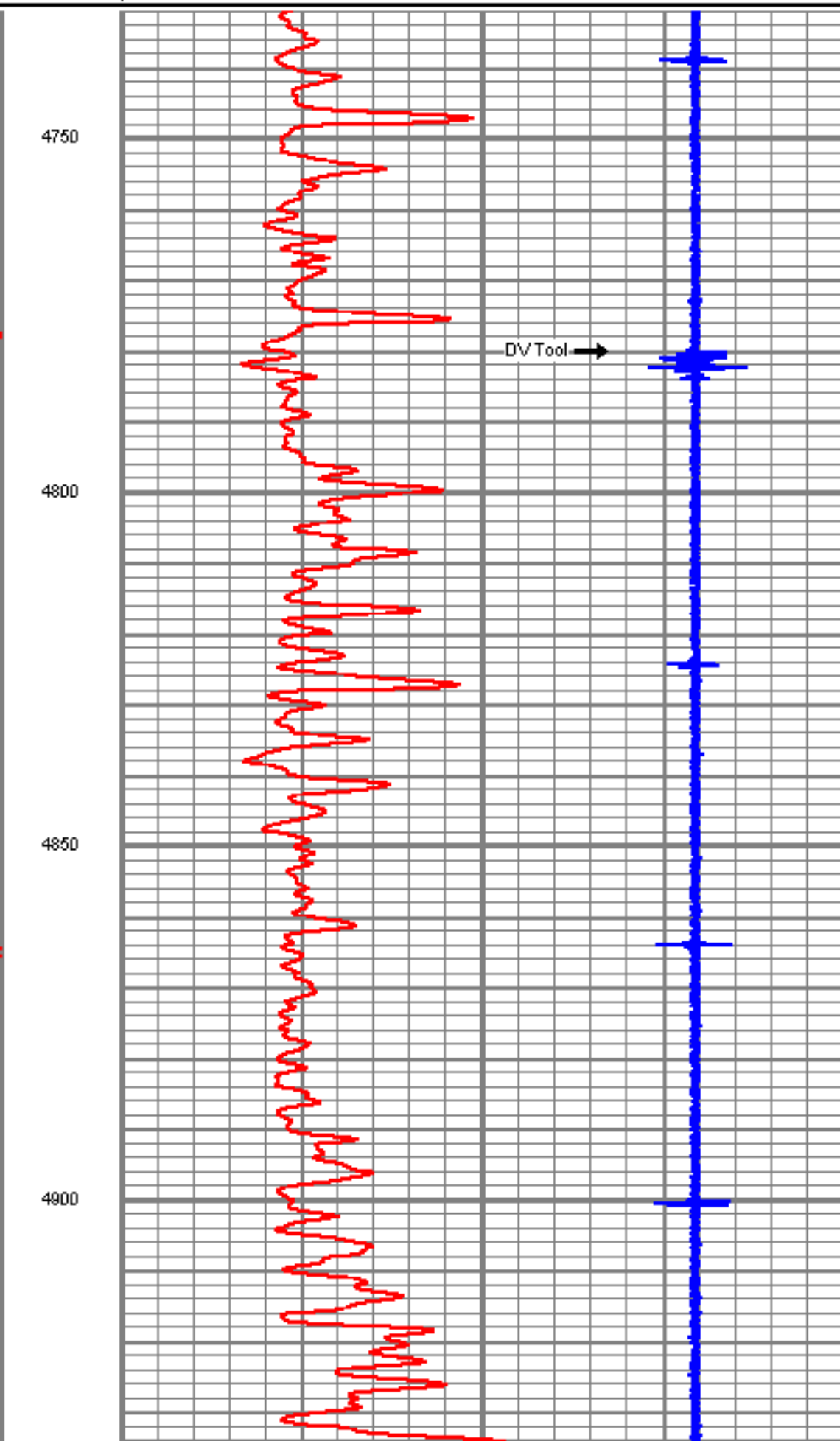
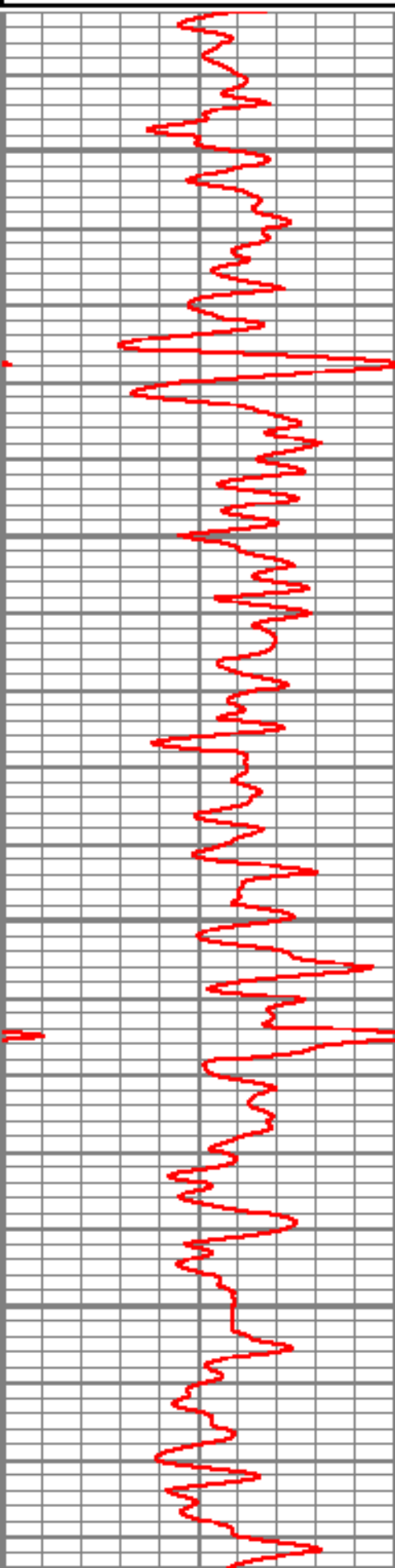
**Comments**

FILE# 0000

0 GR (GAPI) 125

0 CCL 20

30 CNPOR ( $\rho u$ ) -10





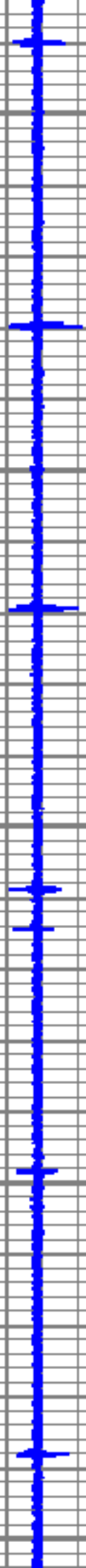
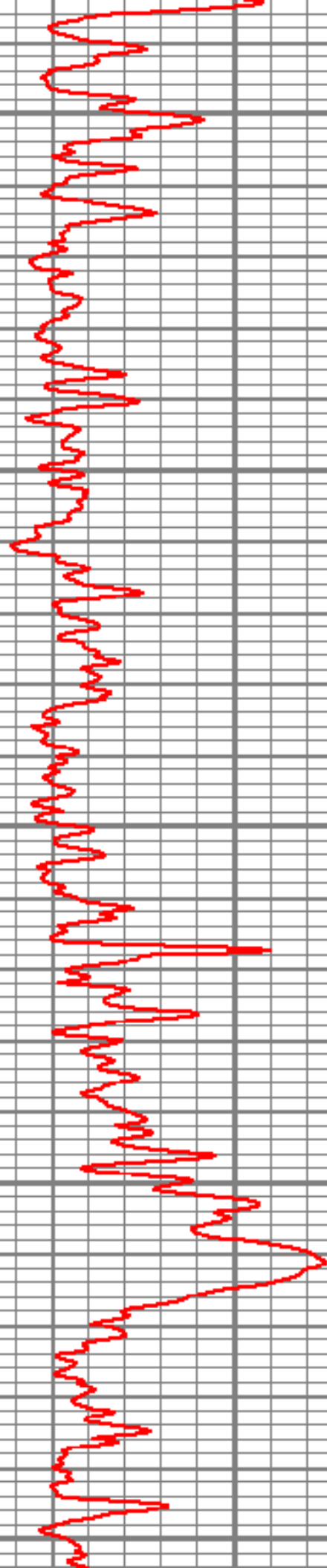
4950

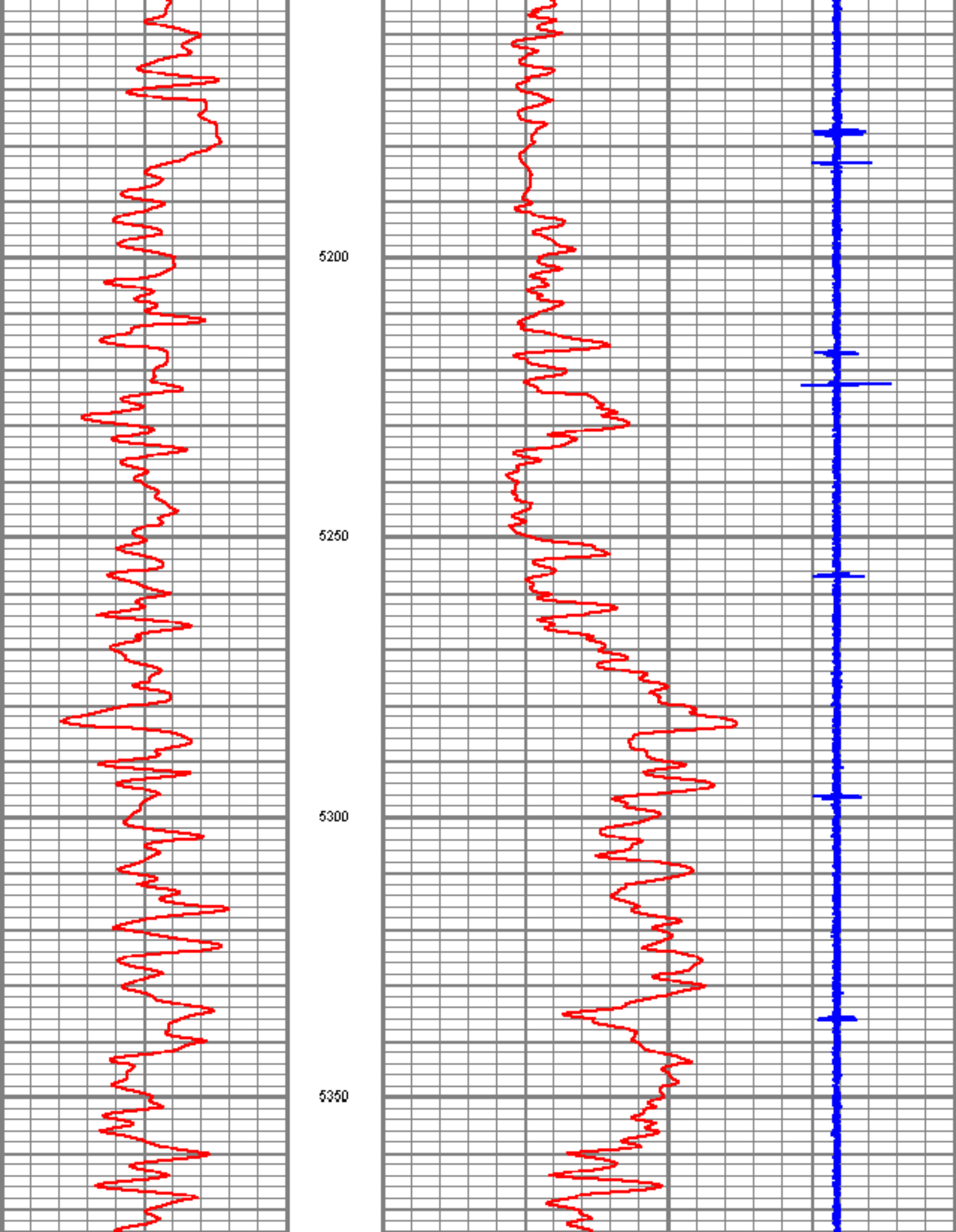
5000

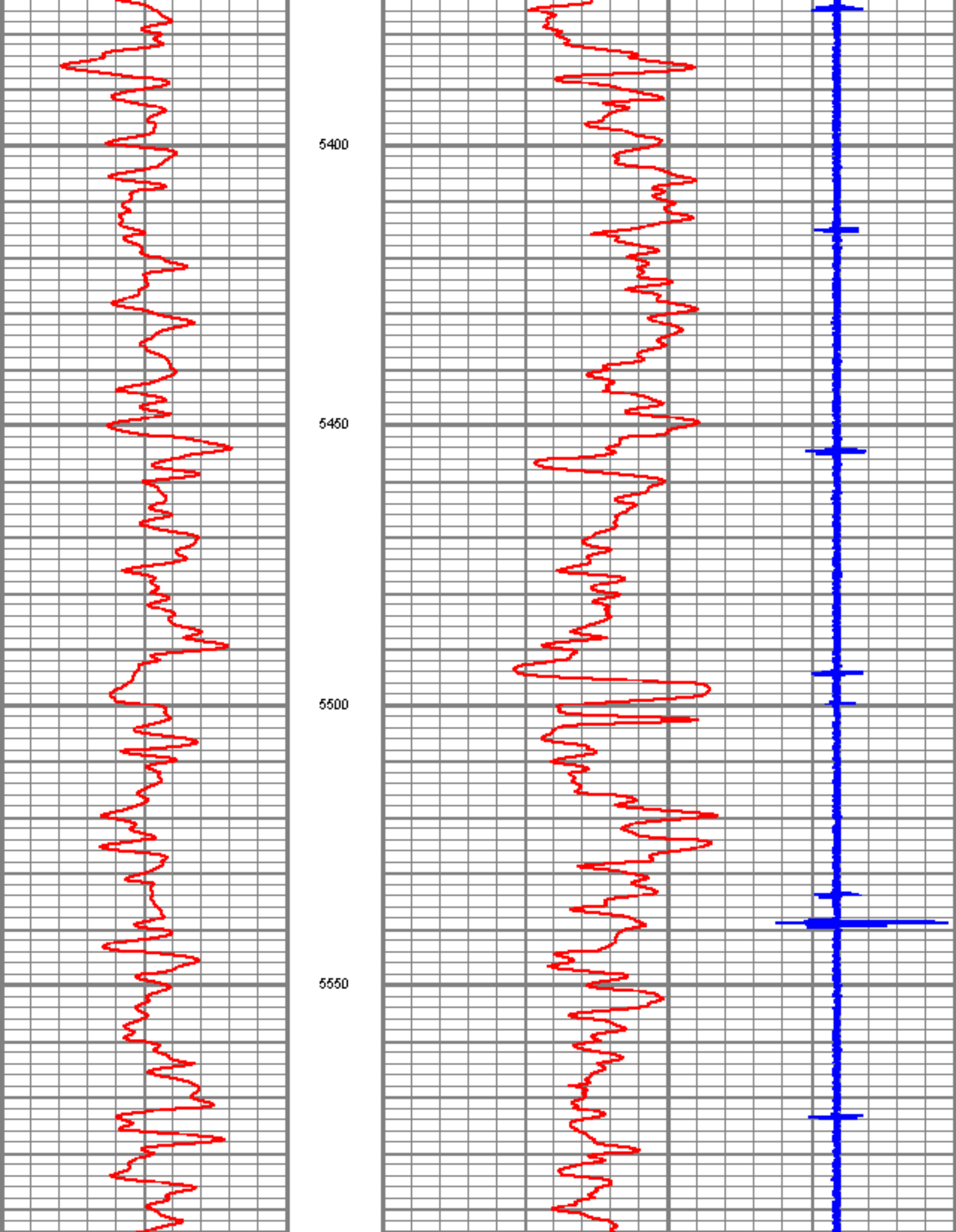
5050

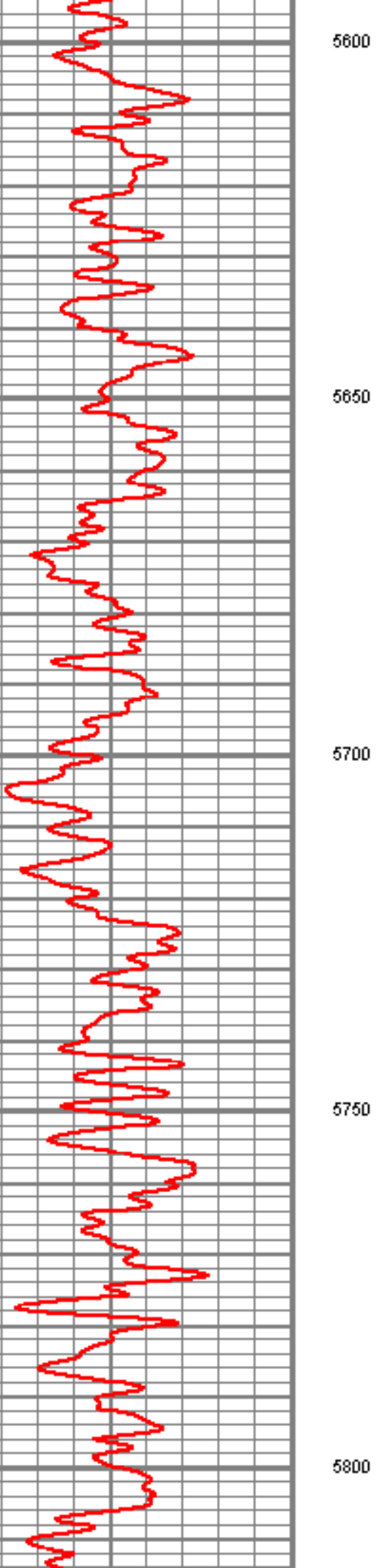
5100

5150









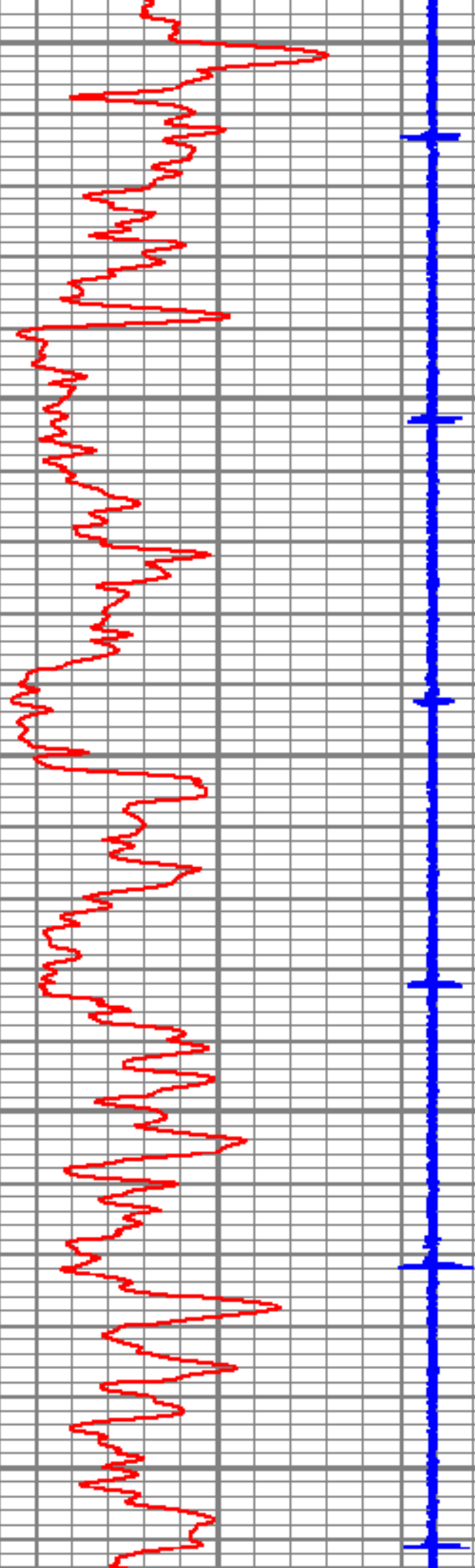
5600

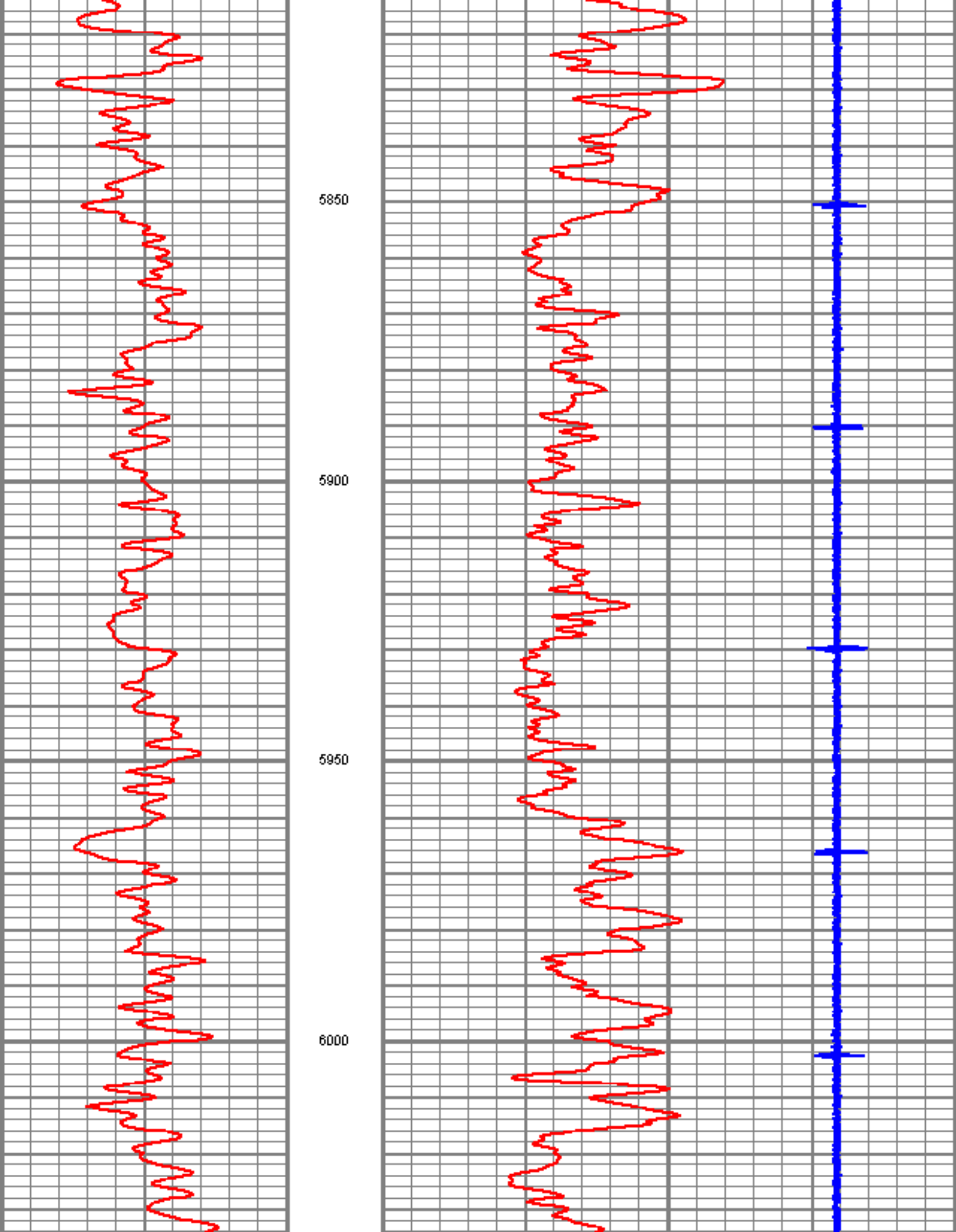
5650

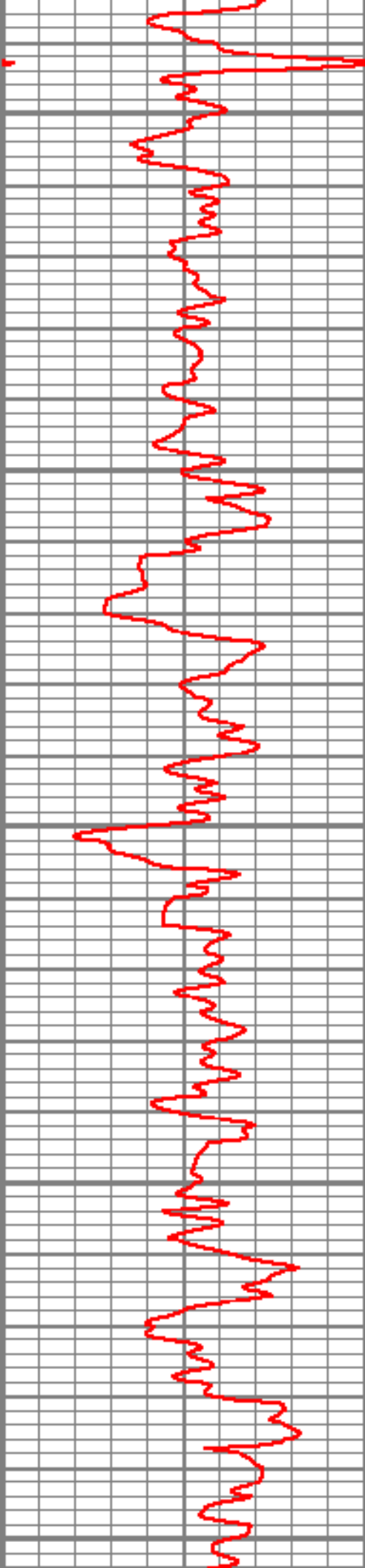
5700

5750

5800







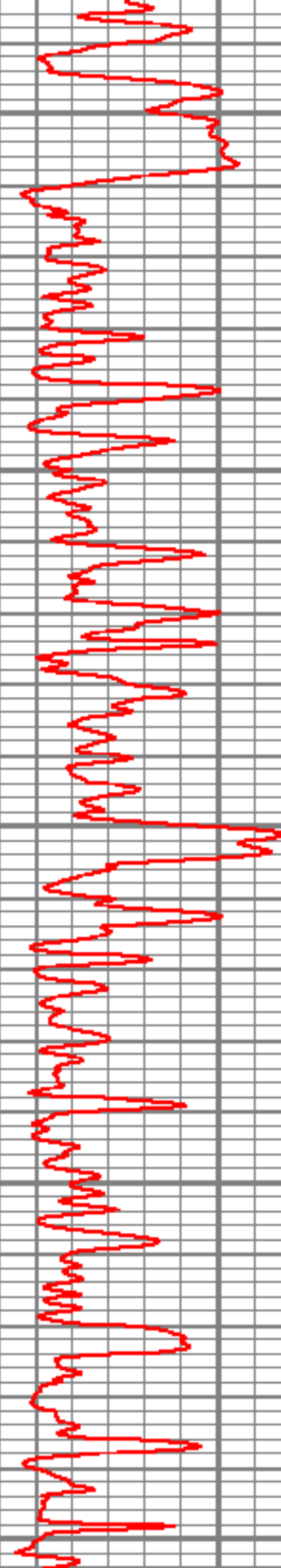
6050

6100

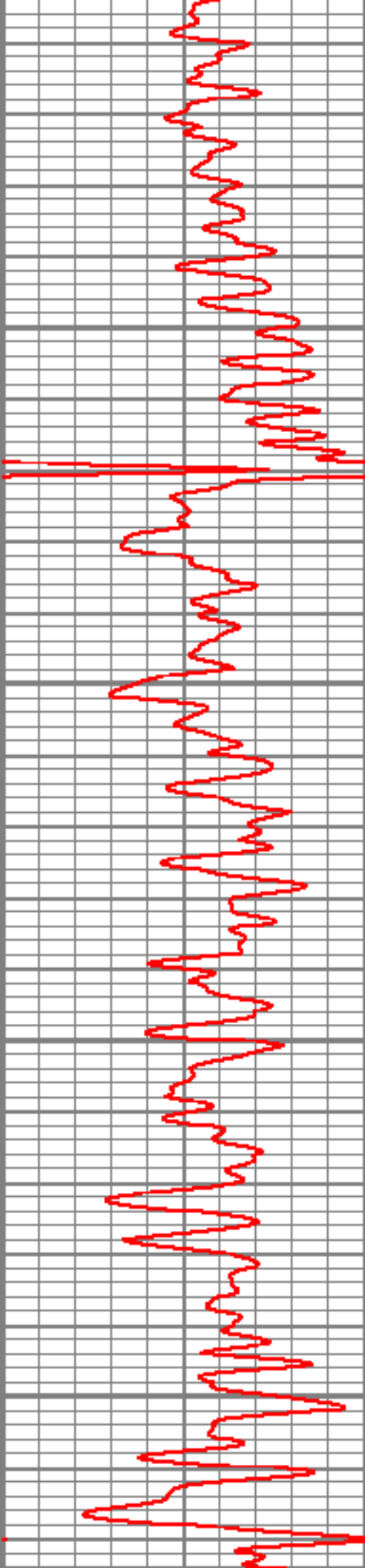
6150

6200

6250





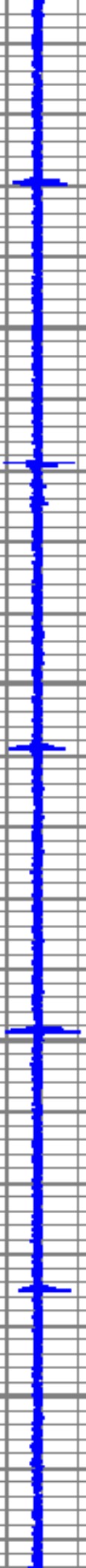


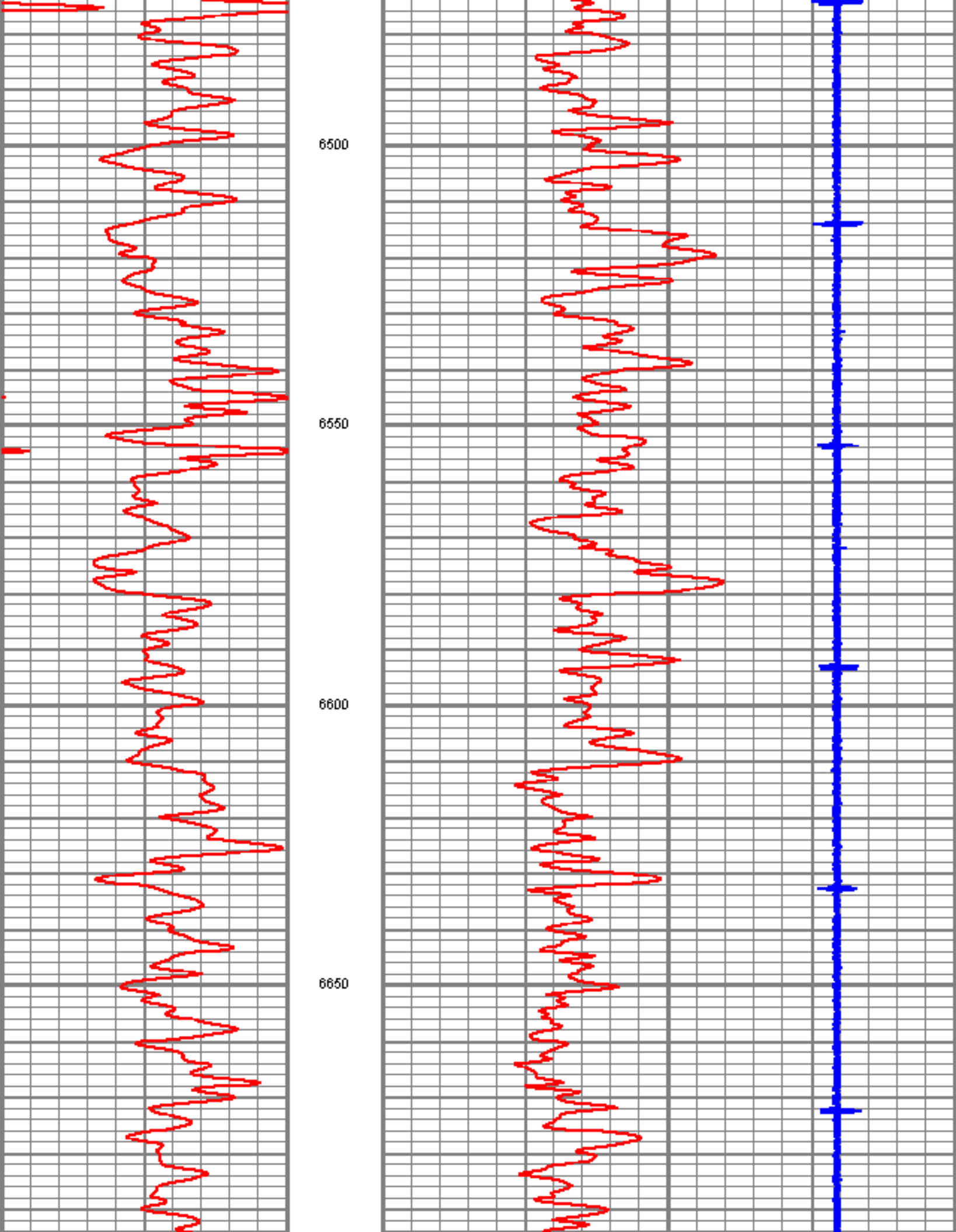
6300

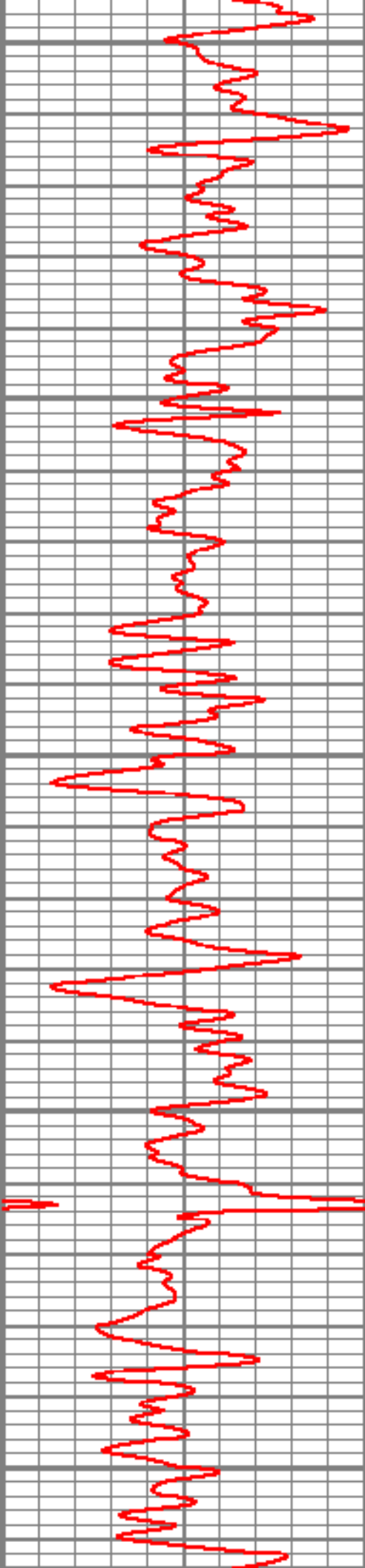
6350

6400

6450







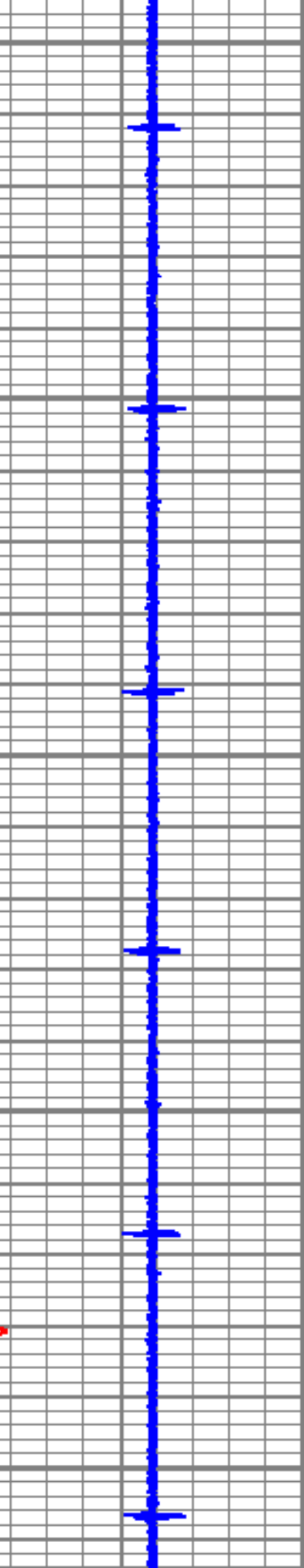
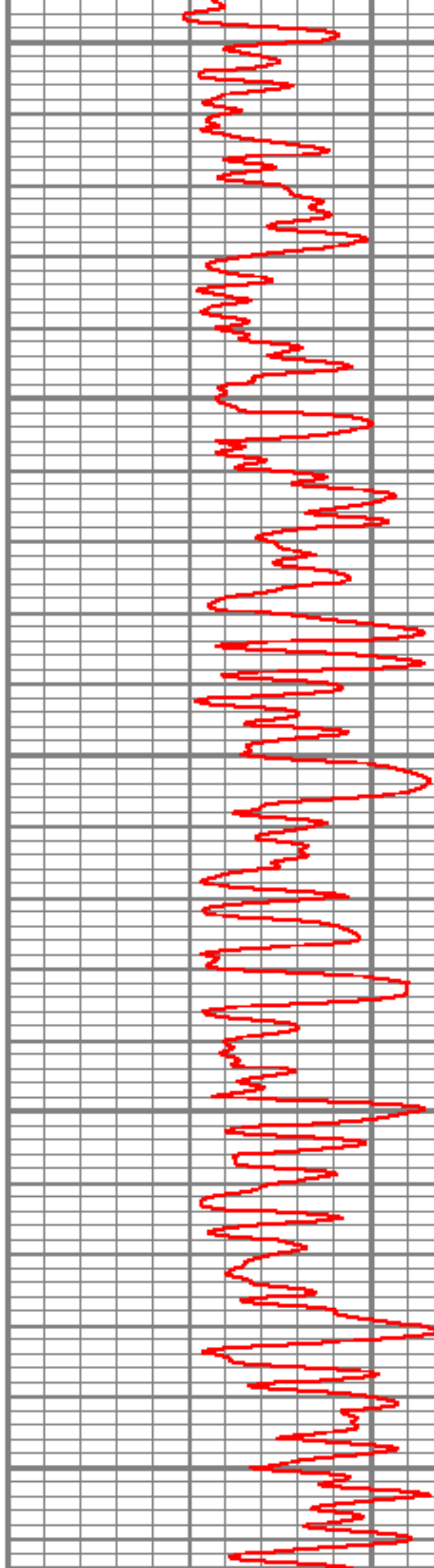
6700

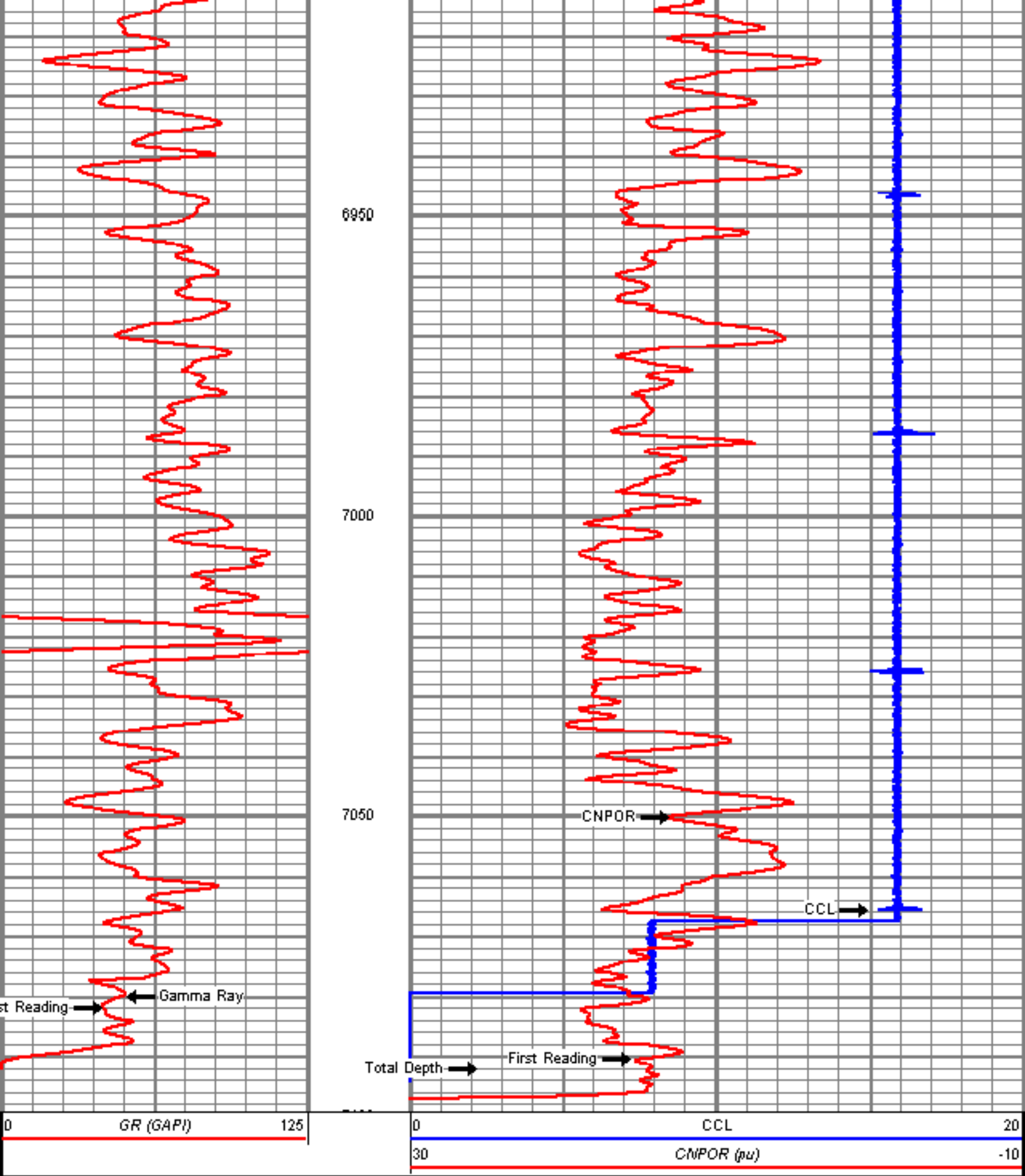
6750

6800

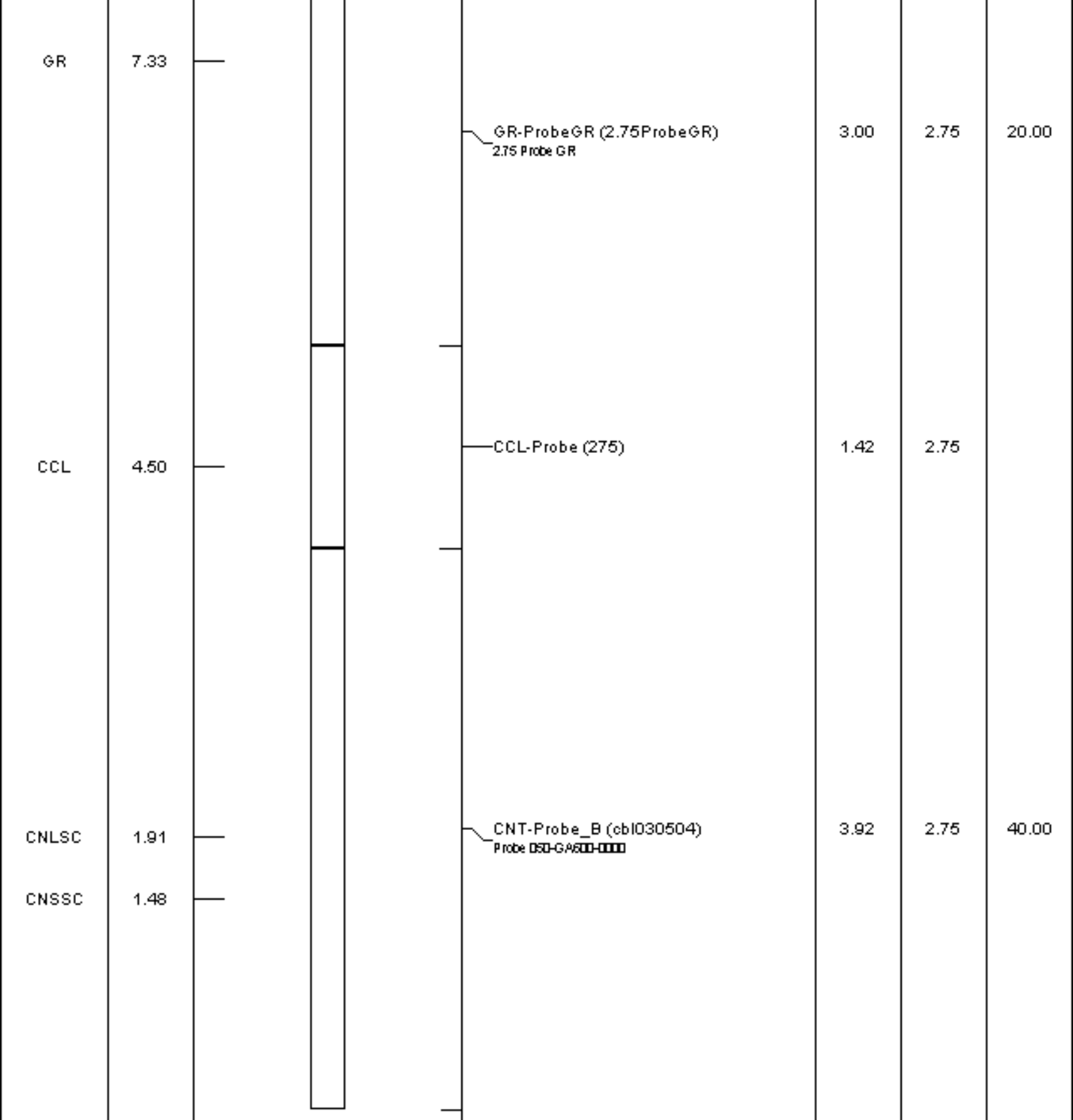
6850

6900





Sensor	Offset (ft)	Schematic	Description	Len (ft)	OD (in)	Wt (lb)



Dataset: 2741.db: field/well/run1/pass2  
 Total Length: 8.33 ft  
 Total Weight: 60.00 lb  
 O.D.: 2.75 in